



Network Routes Layer API Reference Guide

Revision 00

NOTICE

This documentation is supplied without representation or warranty of any kind. Connected2Fiber, Inc. d/b/a Connectbase ("Connectbase") assumes no responsibility and shall have no liability of any kind arising from supply or use of this publication or any material contained herein. Any mention of third-party products is for informational purposes only and constitutes neither an endorsement nor a recommendation. Connectbase assumes no responsibility with regard to the performance of these products.

Copyright©2023, Connectbase All Rights Reserved. This document contains information that is the property of Connectbase. This document may not be copied, reproduced, or otherwise duplicated, and the information herein may not be used, disseminated or otherwise disclosed, except with the prior written consent of Connectbase.

Table of Contents

- About This Guide 1
 - Introduction 1
 - Accessing the Portal 1
 - Related Documentation 1
 - Acronym List 2
 - Contact Customer Support 2
- About Network Routes API 3
 - Rate Limit Policy 3
- Network Routes Layer API 4
 - GET Network Routes 4
- Revision History 6

About This Guide

Introduction

This guide describes the Connectbase Application Program Interface (API) Connected World Network Routes Layer.

Accessing the Portal

Using any standard web browser, you can access the Connectbase API portal by entering the following URL: <https://developer.connectbase.com>.

- If this is your first time visiting the site, click [Sign up](#) to register as a new API user.
- If you are already a registered user, [Sign in](#) using your API login and password.

Related Documentation

Refer to the following documents for detailed information about each of the supported Connectbase API products:

- *Address Autocomplete API Reference Guide*
- *Address Validation API Reference Guide*
- *Advanced CPQ API Reference Guide*
- *Building Competitive Rating API Reference Guide*
- *Connectbase Developer Portal Overview Guide*
- *Connected World Availability API Reference Guide*
- *Connected World Account API Reference Guide*
- *Connected World Building API Reference Guide*
- *Connected World Building Lists API Reference Guide*
- *Connected World Contacts API Reference Guide*
- *Connected World Distributions API Reference Guide*
- *CPQ Components Management API Reference Guide*
- *Demand Engine API Reference Guide*
- *Geocode API Reference Guide*
- *International Processor API Reference Guide*
- *Locations Intelligence API Reference Guide*
- *Network Intelligence API Reference Guide*
- *Network Path API Reference Guide*
- *NNI Management API Reference Guide*
- *Rate Card Management API Reference Guide*
- *Route Management API Reference Guide*
- *Tenant API Reference Guide*

Acronym List

This document uses the following acronyms:

Acronym	Description
API	Application Program Interface
CPQ	Configure, Price, Quote
HTTP	Hyper Text Transfer Protocol
JSON	JavaScript Object Notation
N/A	Not applicable
URL	Uniform Resource Locator
USPS	United States Postal Service

Contact Customer Support

If you require technical assistance or wish to report an issue to the Connectbase Support team, please log into the Connectbase Customer Support portal at <https://support.connectbase.com> and log a ticket.

For other general information, you can contact Customer Support by email at support@connectbase.com or by phone at (508) 202-1807 between the hours of 8:00 a.m. and 5:00 p.m. EST.

About Network Routes API

Network Routes Layer API enables vectortiles format data sharing, include hundreds of US and International Shareable Networks for integration into clients' web applications. These vectortiles are securely hosted on dedicated servers, with the underlying data derived from Connectbase's proprietary Location Truth Shareable Routes datasets.

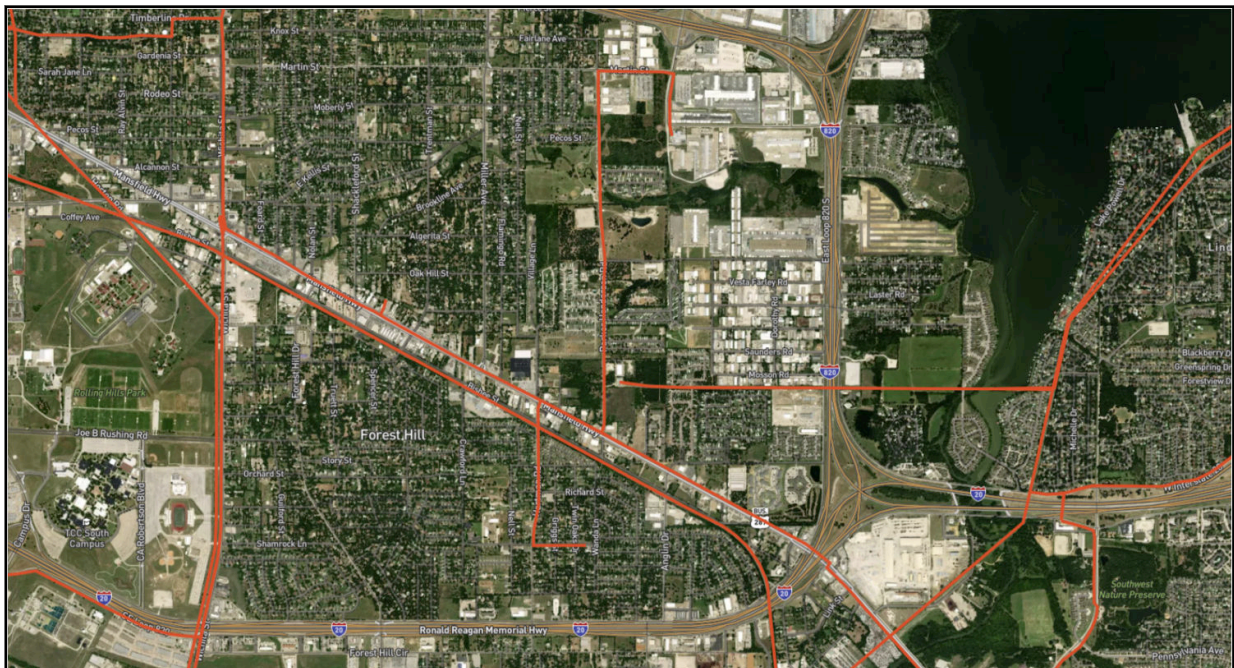
*Please contact salesengineering@connectbase.com to request permission.

Rate Limit Policy

Rate limit is 300 calls per minute.

Currently the API supports visualization zoom level from 0 – 13 in initial release and cache setting is up to 24 hours. You are required to enable local caching to ensure rendering performance.

Following is an example of zoom level 13.



Network Routes Layer API

GET Network Routes

Requirements and Special Considerations

All request parameters are required fields.

Request URL

<https://appi-dev.connectbase.com/md-network-routes-layer/v1/{z}/{x}/{y}>

Request parameters	Characteristic	Description/Requirements
x	integer	X (Tile Column): The x-coordinate, often referred to as the "tile column," identifies the horizontal position of the tile within the grid of tiles at the specified zoom level. The x-coordinate is usually an integer value that ranges from 0 (leftmost tile) to $2^z - 1$ (rightmost tile) at zoom level z.
y	integer	Y (Tile Row): The y-coordinate, often referred to as the "tile row," identifies the vertical position of the tile within the grid of tiles at the specified zoom level. The y-coordinate is also usually an integer value that ranges from 0 (topmost tile) to $2^z - 1$ (bottommost tile) at zoom level z.
z	integer	Z (Zoom Level): The zoom level, often denoted as "z," represents the level of detail or scale at which you want to view your map. Zoom level 0 typically represents the entire world as a single tile. As you zoom in, you increase the zoom level, which results in more tiles being used to display the map. Zoom levels are typically integers.

Request headers	Characteristic	Description/Requirements
Ocp-Apim-Subscription-Key	string	The subscription key that provides access to this API, which can be found in your Profile.

GET Network Routes request URL

Example <https://api-uat.connectbase.com/md-network-routes-layer/v1/{3}/{2}/{2}>

Success Response Example in Vectortile Format

```
"4713798"  
"2023-05-07 17:17:07"
```

Success Response Example in Vectortile Format

```
"BLUE OCEAN"  
"4713706"  
"2023-01-27 17:48:42"  
"CROWN CASTLE"  
...
```

Response Attributes and Data Types

Response Attribute	Attribute Description	Data Type
"provider_id"	Connectbase internal supplier identifier	String
"last_modified_date"	Last modified date of supplier network	String
"provider_name"	Supplier Name	String

Error Response Example

When there's no vectortile file found, it will return below (not an error):

```
Error code: 200  
{  
  status: 'success',  
  message: 'no vectortile find here'  
}
```


Revision History

Revision	Date	Description
00	September 16, 2023	This is the initial release of this document, representing v1.